

Customer :

customer

Customer part :

customer part

Comment :

Comment

S1=4.06

S2=5.27

Tmax=468

Tp S2=507.0

PI=0.44

HI=80

Sample =1757.30

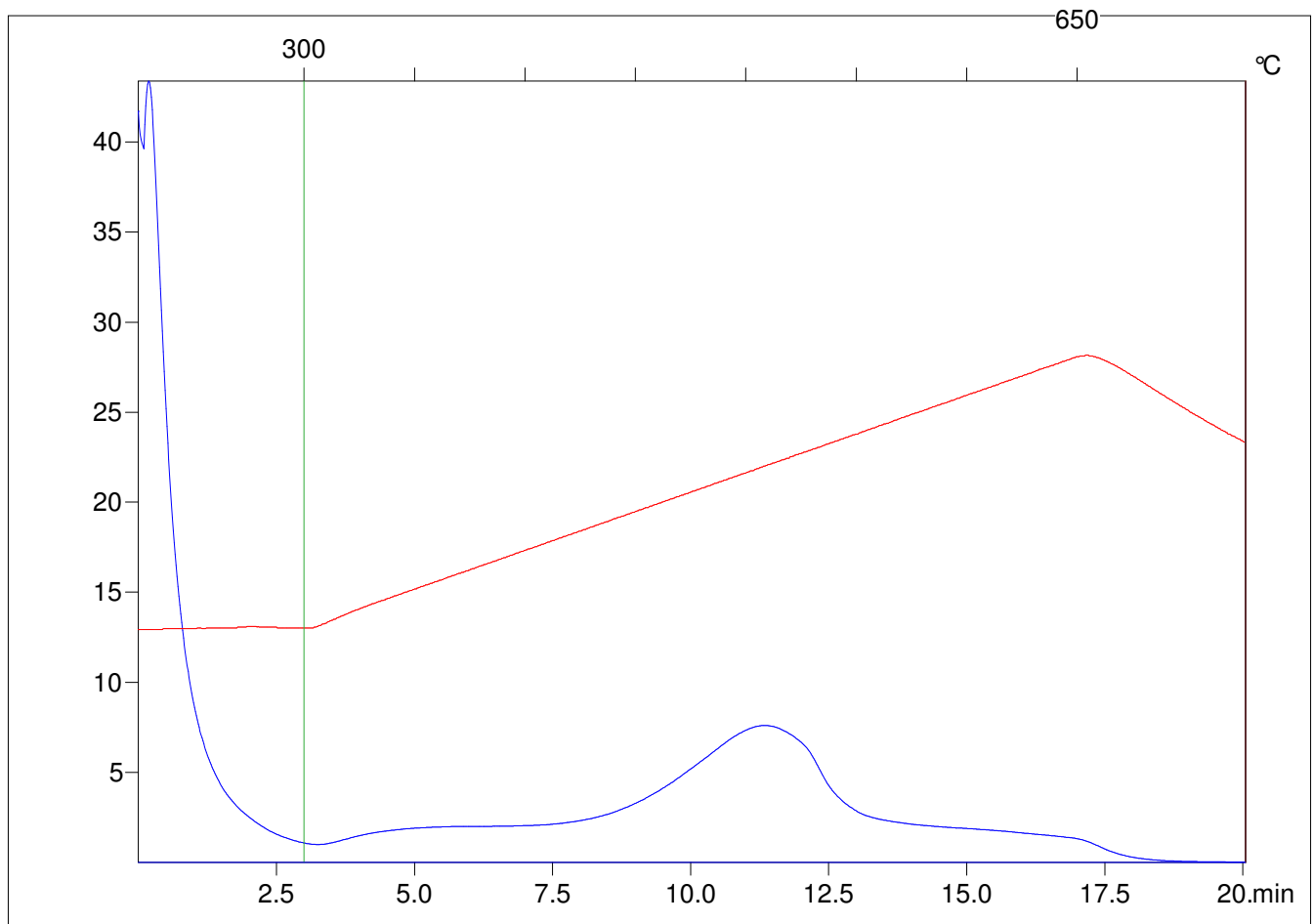
Method =Bulk Rock

Cycle=Basic

KFID(10*9)=1444

Qty =69.9

TOC=6.62



C:\VINC\PK3_1792\PK014.R00 : FID pyrolysis graphic

State

Pyro Status

Oxi Status